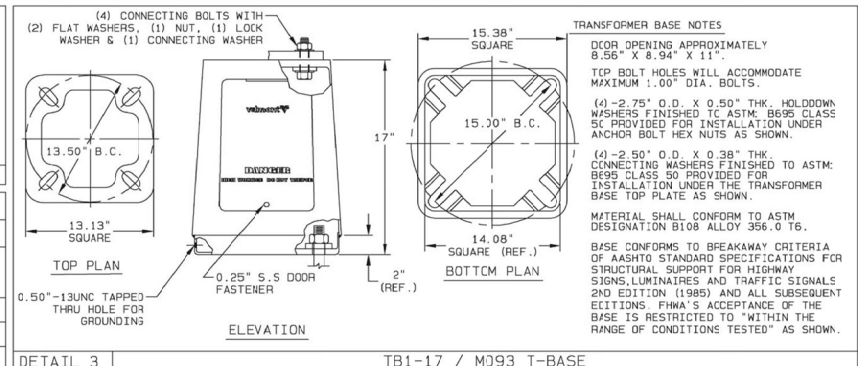
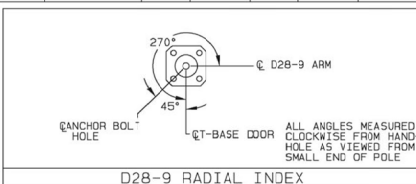
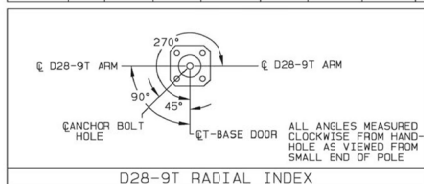


| MATERIAL & FINISH DATA | | | |
|---|------------------|------------------|--|
| COMPONENT | ASTM DESIGNATION | MIN. YIELD (KSI) | |
| POLE BASE | A595 GR. A | 55 | |
| ARM SHAFT | A595 GR. A | 55 | |
| BASE PLATE | A36 | 36 | |
| *ANCHOR BOLTS | F1554 GR. 55 | 55 | |
| T-BASE CONN. BOLTS | A325 | -- | |
| SYSTEM: V-PRO 32 (VP32) LIQUID (ALTERNATE) | | | |
| BASE COAT: HOT-DIP GALVANIZED TO ASTM A123 | | | |
| PRIME COAT: POLYAMIDODIAMINE OR POLYAMIDE EPOXY | | | |
| FINISH COAT: ALIPHATIC ACRYLIC POLYURETHANE | | | |
| COLOR: DARK BRONZE / BLACK | | | |
| SPEC: F-306KU / F-306B | | | |

| DESIGN INFORMATION | | | |
|--------------------------------------|--|--|--|
| CRITERIA: AASHTO 2001 | | | |
| WIND VELOCITY: 90 MPH | | | |
| RECURRENCE INTERVAL: 50 YEARS | | | |
| FIXTURE EPA: 0.90 FT ² EA | | | |
| FIXTURE WEIGHT: 21 LBS EA | | | |

| POLE AND ARM DATA | | | | | | | | | | | | |
|-------------------|------|----------------|---------------|-------------|-----------------|----------------------|---------------|---------------|---------------|-----------------|---------------|------------------------|
| TYPE | QTY. | POLE TUBE | | | POLE BASE | | | ANCHOR BOLT | | | ARM TUBE | |
| | | BASE DIA. (IN) | TOP DIA. (IN) | LENGTH (FT) | SQUARE "S" (IN) | BOLT CIRCLE "Y" (IN) | THK. "M" (IN) | HOLE "Z" (IN) | DIA. "K" (IN) | LENGTH "L" (IN) | HOOK "H" (IN) | THREAD LENGTH "U" (IN) |
| D28-9T | | 6.96 | 4.72 | 16.00 | 11 | 13.13 | 13.50 | 1.25 | 1.25 | 1.00 | 36.00 | 4.00 |
| D28-9 | | 6.96 | 4.72 | 16.00 | 11 | 13.13 | 13.50 | 1.25 | 1.25 | 1.00 | 36.00 | 4.00 |



*** IMPORTANT NOTE ***

1. WRITTEN CONFIRMATION MUST BE PROVIDED CONFIRMING ALL MOUNTING HEIGHTS, ORIENTATIONS, & FINISH PRIOR TO RELEASE FOR PRODUCTION.
2. BLACK COAT AND FINISH IS ONLY TO BE USED IF POLES ARE LOCATED IN THE ENTERTAINMENT DISTRICT OVERLAY OR THE DOWNTOWN OVERLAY
3. ALL POLE TO BASE CONNECTING HARDWARE IS TO BE SUPPLIED WITH T-BASES

| | | | | | | |
|---------------|---------------|-------------|----------|---|---------------------------------|----------------------------|
| JWK3 07/16/18 | JWK3 07/18/18 | DESCRIPTION | SOLD TO: | VALMONT INDUSTRIES, INC. RESERVES THE RIGHT TO INSTALL VARIOUS, ENGINEER APPROVED, MATERIAL HANGING ACCOMMODATIONS TO FACILITATE THE MANUFACTURING PROCESS. | valmont | ORDER NUMBER: 413374-P1 |
| REV | DATE | DESCRIPTION | SHIP TO: | AGENT: | Valley, NE 68064 (402) 359-2201 | PAGE NUMBER: 1 OF 1 |
| | | | | | | DRAWING NUMBER: TX413374P1 |

CITY OF ARLINGTON, TEXAS

28FT Residential Single & Double Davit Poles with Base

| | | |
|--------------|------------|--------------|
| DATE: | SCALE: NTS | SHEET 1 OF 1 |
| DESIGNED BY: | DRAWN BY: | CHECKED BY: |

STREET LIGHT STANDARD – RESIDENTIAL STREETS ONLY
5/4/23